

Lubricating Pump (Motor Driven Type)

Motor-driven lubricating pumps for unattended lubricating systems

Each of the IHI motor-driven lubricating pumps consists of a pump body, a motor, and a reservoir. Plug the power cable of the pump to the outlet and turn on the power switch. The pump pressure supplies grease (or oil).

Table 2 Selection of Motor-Driven Lubricating Pumps and Available Distributors

Motor-driven lubricating pump			Distributor / (L) for oil	Maximum number of oil ports	
Grease	Oil	Power supply		Grease	Oil
SK-505BM-04	SK-505BML-04	24 V DC	U-□R (L) U-□M (L) MUM-□R (□-□) MUM-□M (□-□)	60 ports	60 ports
SK-505BM-1	SK-505BML-1				
SK-505BM-1-LLS	SK-505BML-1-LLS				
SK-505BM-04-AGT	SK-505BML-04-AGT				
SK-505BM-1-AGT	SK-505BML-1-AGT				
SK-505BM-1-LLS-AGT	SK-505BML-1-LLS-AGT				
SK-521-2	SK-521L-2	200 V AC ø3		120 ports	120 ports
SK-521-2-LLS	SK-521L-2-LLS				

Note: "Maximum number of lubricating ports" for the use of the MUM distributor (See Page 30)

Piping Diagram

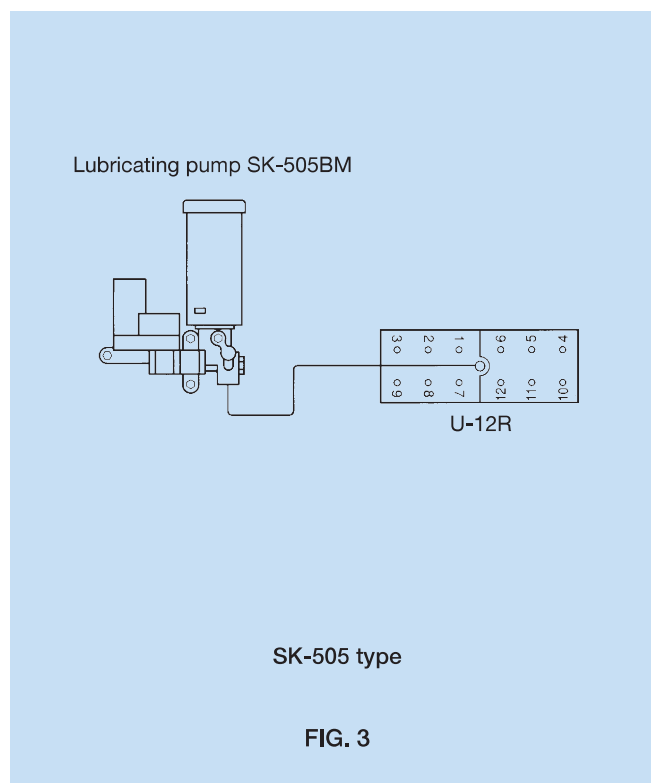
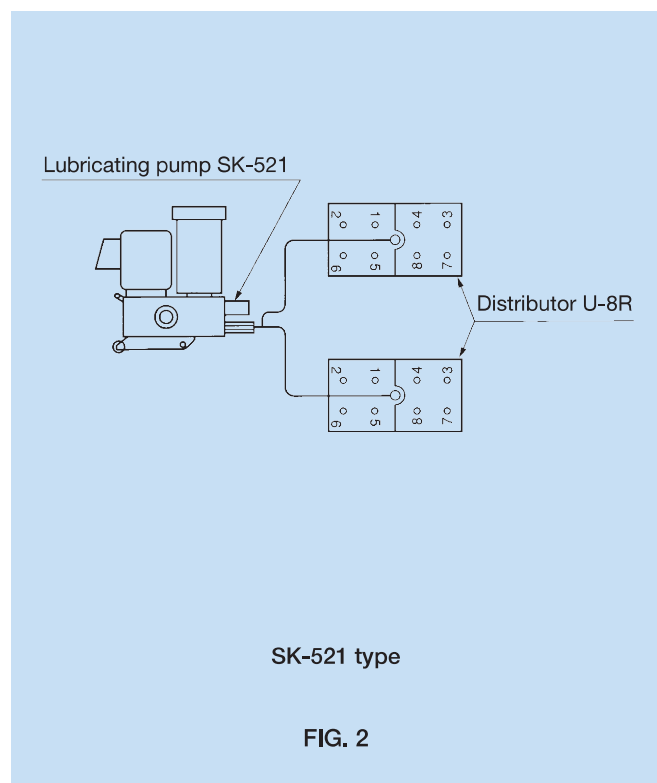


Table 3 Specifications of Motor-Driven Lubricating Pumps

Lubricant	Code No.	Model	Port	Discharge Pressure	Discharge Capacity	Reservoir Capacity	Reservoir Empty switch	Power supply	Net Weight	Dimensions
Grease	RK990100	SK-505BM-04	1 port	Maximum 14.7 MPa (Relief pressure: 15.7 +/- 1 MPa)	13 cm³/min or more	0.4 ℓ (0.3)	None	24 Vdc, 1.5A or less, 5 minutes rated	1.1 kg	FIG. 4
	RK990200	SK-505BM-1				1 ℓ (1.0)			Pre-installed	1.8 kg
	RK991700	SK-505BM-1-LLS					1.9 kg			FIG. 6
	RK939300	SK-521-2	2 ports (or 1 port when ordered)		20 cm³/min by 2 ports (at 50Hz) 25 cm³/min or more by 2 ports (at 60Hz)	2 ℓ (1.8)	None	200 Vac, 100 W, 3 phases, 60 minutes rated	10.0 kg	FIG. 8
	RK939400	SK-521-2-LLS					Pre-installed		10.4 kg	FIG. 9
Oil	RK991100	SK-505BML-04	1 port	Maximum 5.9 MPa (Relief pressure: 6.9 +/- 1 MPa)	13 cm³/min or more	0.4 ℓ (0.3)	None	24 Vdc, 1.5A or less, 5 minutes rated	1.1 kg	
	RK991200	SK-505BML-1				1 ℓ (1.0)			Pre-installed	1.8 kg
	RK991300	SK-505BML-1-LLS					1.9 kg			FIG. 7
	RK939500	SK-521L-2	2 ports (or 1 port when ordered)		2.5 - 20 cm³min by 2 ports (at 50Hz) 3 - 25 cm³/min or more by 2 ports (at 60Hz)	2 ℓ (1.8)	None	200 Vac, 100 W, 3 phases, 60 minutes rated	10.0 kg	
	RK939800	SK-521L-2-LLS					Pre-installed		10.4 kg	FIG. 10

• The reservoir capacity enclosed in parentheses is an effective capacity. • The discharge capacity is at 9.8 MPa for grease or at 4.9 MPa for oil.

SK-505BM-04 (for grease)

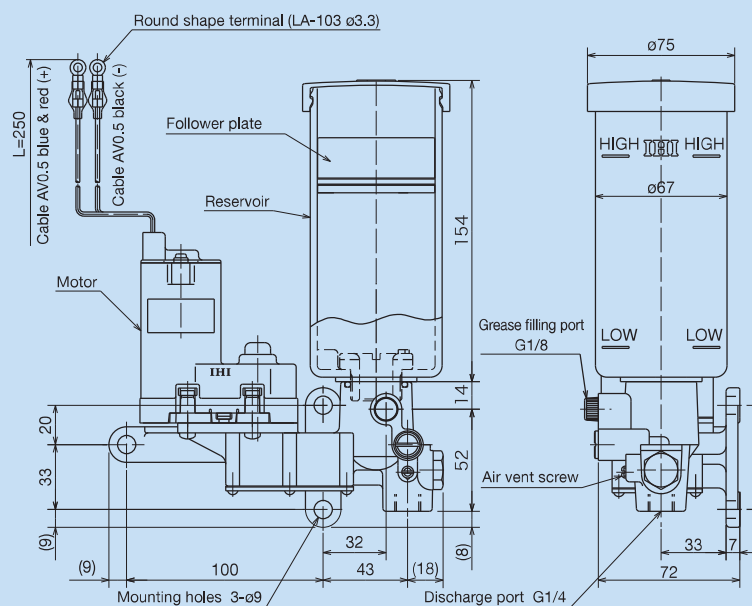
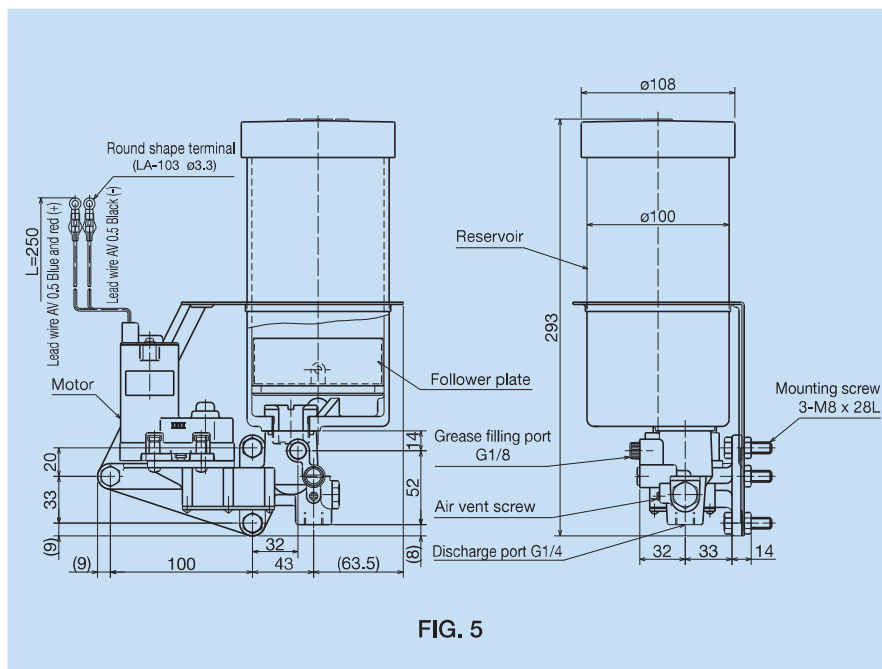


FIG. 4

Lubricating Pump (Motor Driven Type)



SK-505BM-1 (for grease)



SK-505BM-1-LLS (for grease)

